

A1A/COLLINS AVE MULTIMODAL CORRIDOR STUDY

**PRESENTATION TO THE MID-BEACH
NEIGHBORHOOD ASSOCIATION**

SEPTEMBER 2, 2020

INTRODUCTION - PROJECT TEAM



Tiffany Gehrke,
Project Manager



Dan Hardy,
Project Manager



Nicole Estevez
Senior Planner



INTRODUCTION - DISCUSSION TOPICS

1

STUDY PURPOSE

2

**TECHNICAL SCOPE &
SCHEDULE**

3

**OUTREACH / PUBLIC
INVOLVEMENT**

4

NEXT STEPS

INTRODUCTION



EARLY ENGAGEMENT
(PRE-PROJECT KICK OFF)
**WE'RE IN LISTENING
MODE**



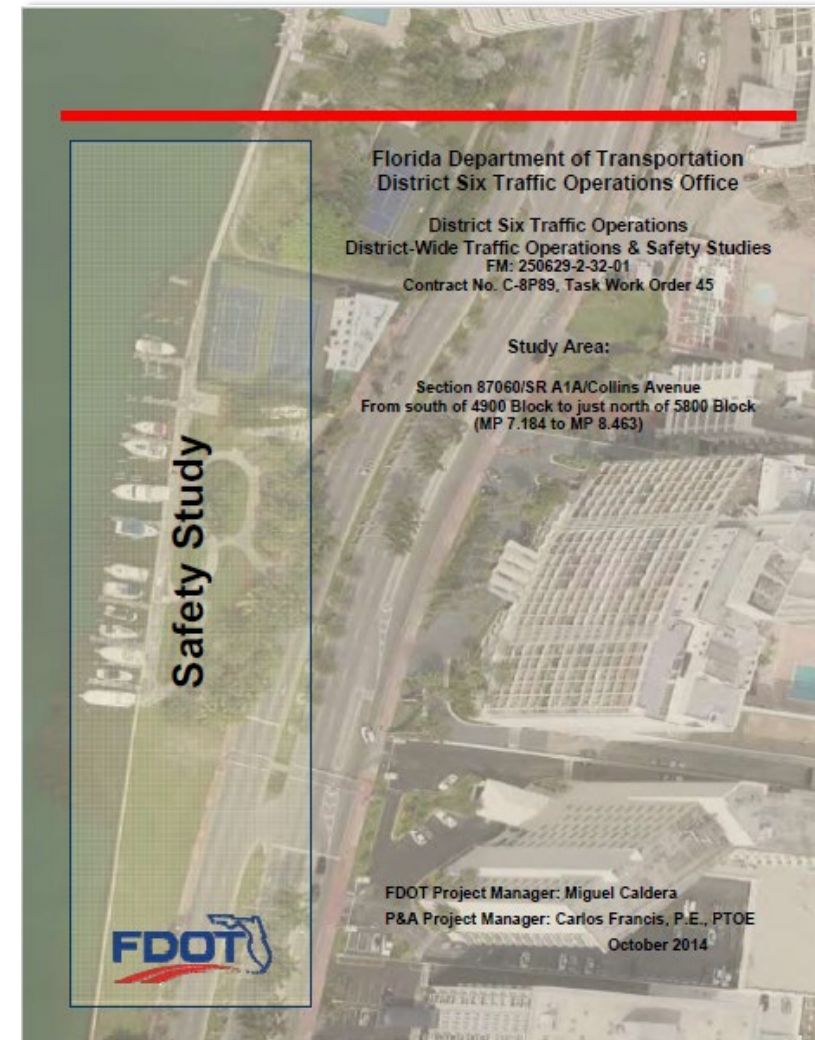
**ENCOURAGE OPEN
CONVERSATION AND
DIALOGUE**



INFORM
*STUDY TIMELINE,
COVID & LIMITS*

STUDY PURPOSE

- Rethink 2016 safety study
- Expand study scope to
 - Consider all modes of travel
 - Think beyond the pavement
 - Address possibilities to repurpose service road
 - Consider connections beyond study limits
- Be collaborative and inclusive
- Build on what we know; learn what we don't (yet), so we can.....

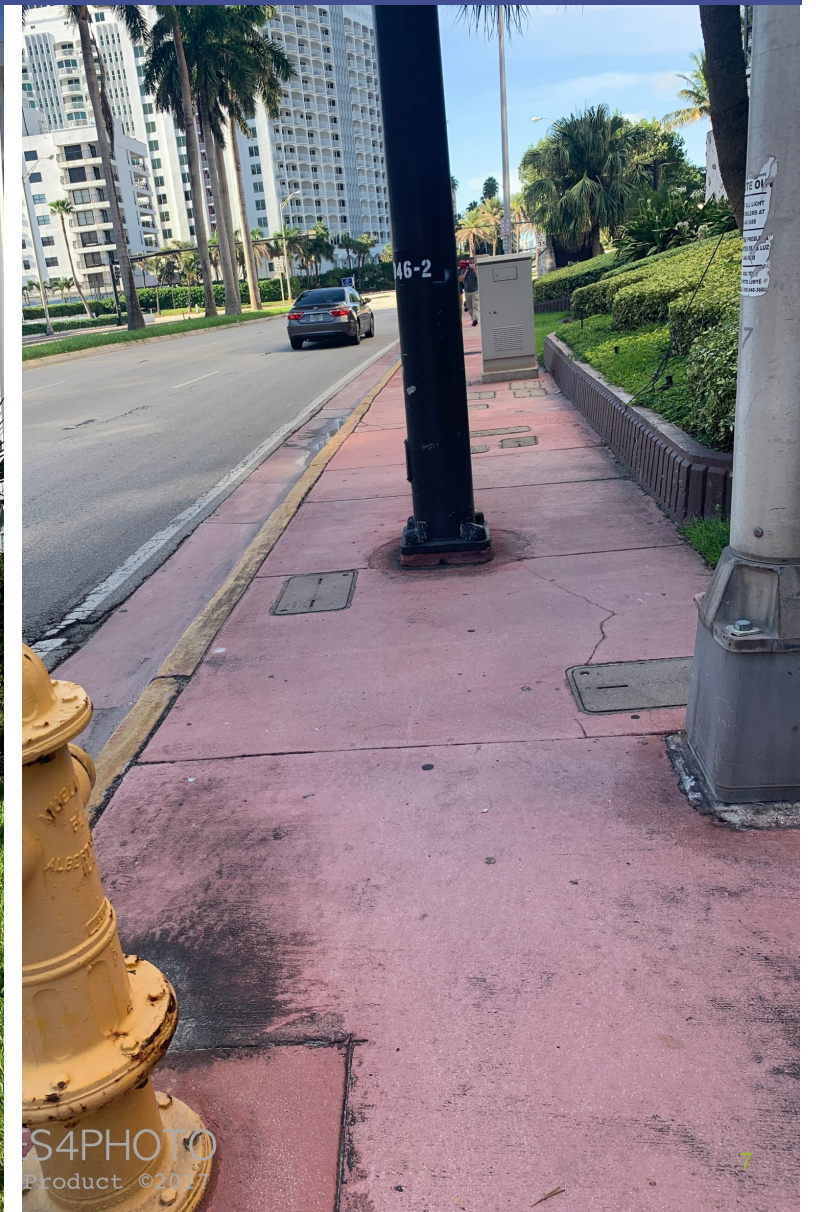


2016 Safety Study Report



....ADDRESS OPERATIONAL CONCERNS

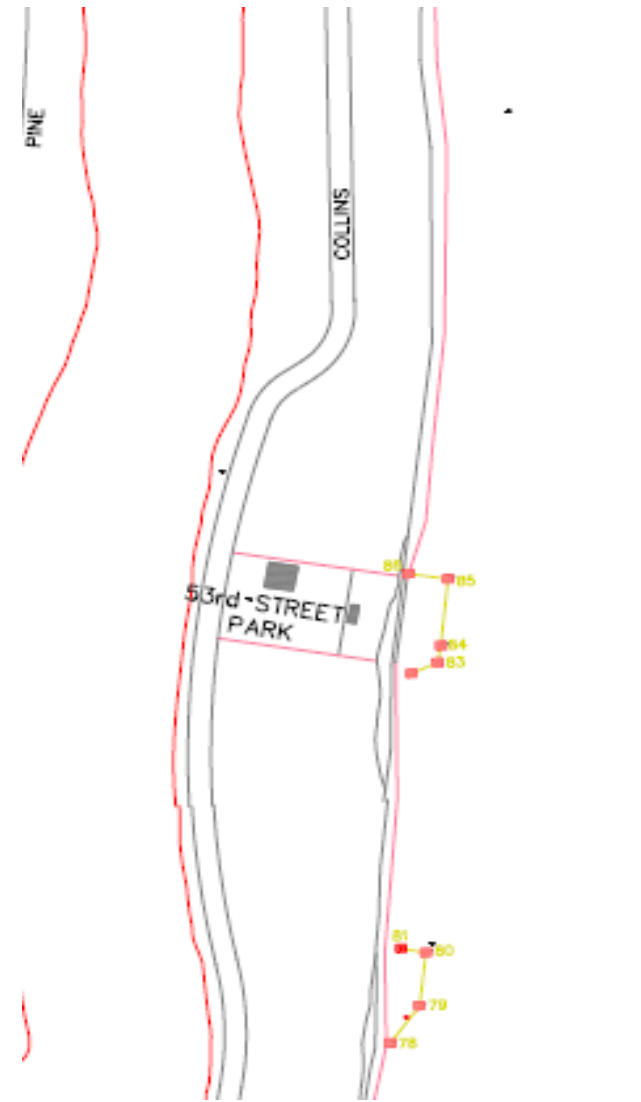
....IMPROVE WALKABILITY





LEGEND

- ERUV ON POLES PVC
- SEAWALL ERUV BOUNDARIES
- ROHR FAMILY ERUV EXPANSION
- ON ERUV POLES IN CITY PROPERTY
- NEW ERUV ON NEW POLES
- NEW POLE LOCATION
- EXISTING WALLS OR FENCES



...INCREASE COMFORT FOR ALL USERS

...CONNECT WITHIN AND BEYOND STUDY LIMITS

Greenway/Bikeway Network MIAMI BEACH

- Blue Slot Locations
- Orange Greenways Existing Trails
- Green Greenways Trail Priorities
- Red Greenways Trail Opportunities
- Blue Bikeways
- Dark Green Park Areas
- Dashed Municipal Boundary



Bikeways, Bike Slot, from Miami-Dade Open Data Hub
2019; Greenways and Trails data from Florida Greenways
and Department of Environmental Protection, downloaded on 5/31/2019



Date: 7/11/2019

Transit Corridors and Transit Intermodal Hubs

Legend

Potential/Existing Transit Hubs



Transit Corridors

Orange Trolley/Street Car Corridors

Blue Bus Routes

Dashed Municipal Boundary



MIAMI BEACH



Date: 7/11/2019

Map created by KCI at the direction of City of Miami Beach.
Bus and trolley routes of Miami Beach and provided by the City of Miami Beach, 07/2019.
World Light Gray Canvas Base: Esri, HERE, Garmin, (c) OpenStreetMap contributors,

FDOT Context Classification Guide



July 2020



Urban



Street



Design



Guide



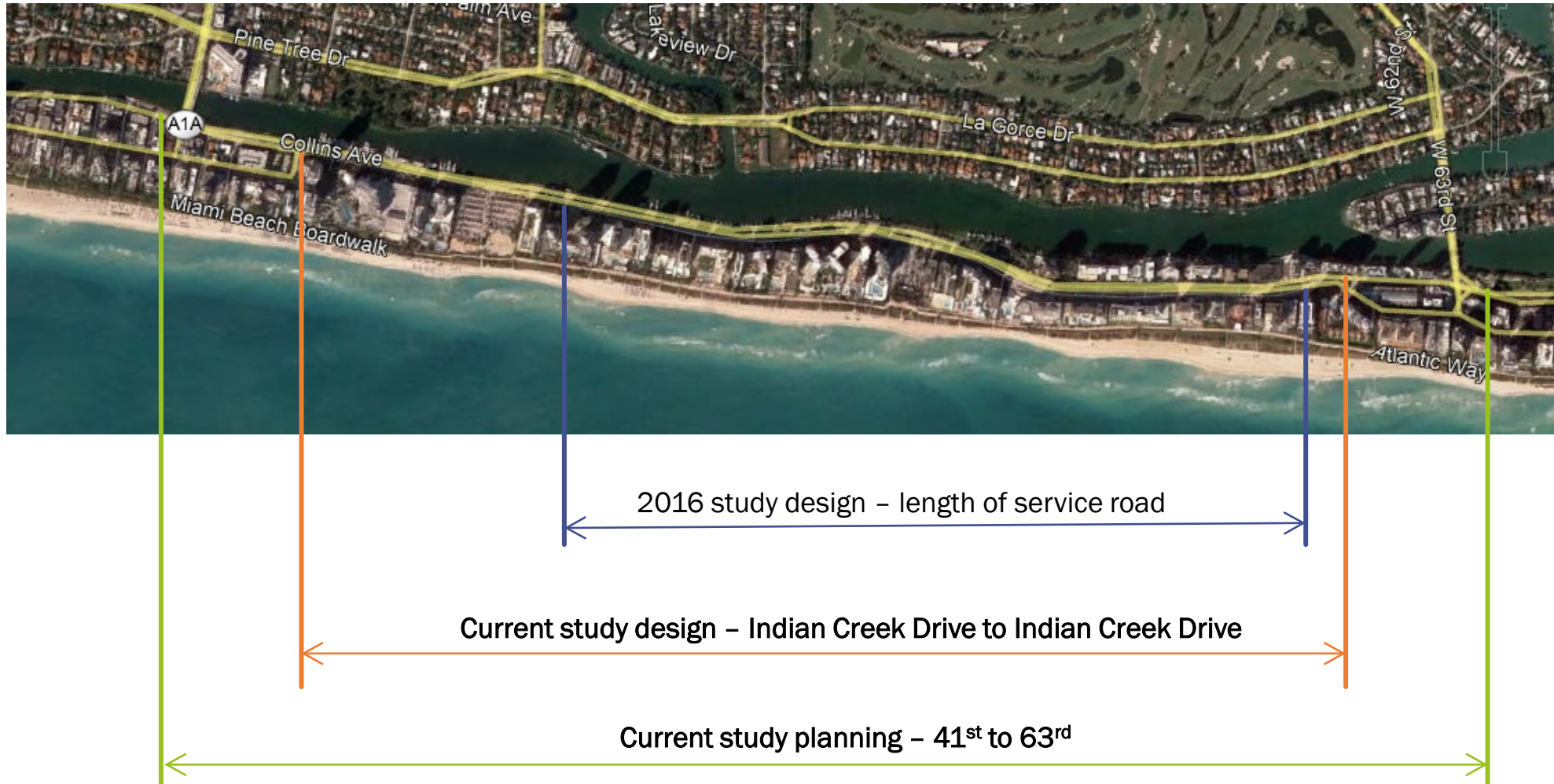
National Association of City Transportation Officials

...AND APPLY
INNOVATIVE
IDEAS

TECHNICAL SCOPE

- Study Area
- Study Tasks and Deliverables
- Study Timeline
- Project Implementation Process

STUDY AREA



GENERAL OVERVIEW OF MAIN TASKS

1

Project Management

2

Stakeholder
Engagement
(Intergovernmental &
Public)

3

Existing Data
Collection & Analysis

4

Existing and Future
Traffic Analysis

5

Multimodal
Conceptual
Alternative
Development &
Evaluation

6

Final Report

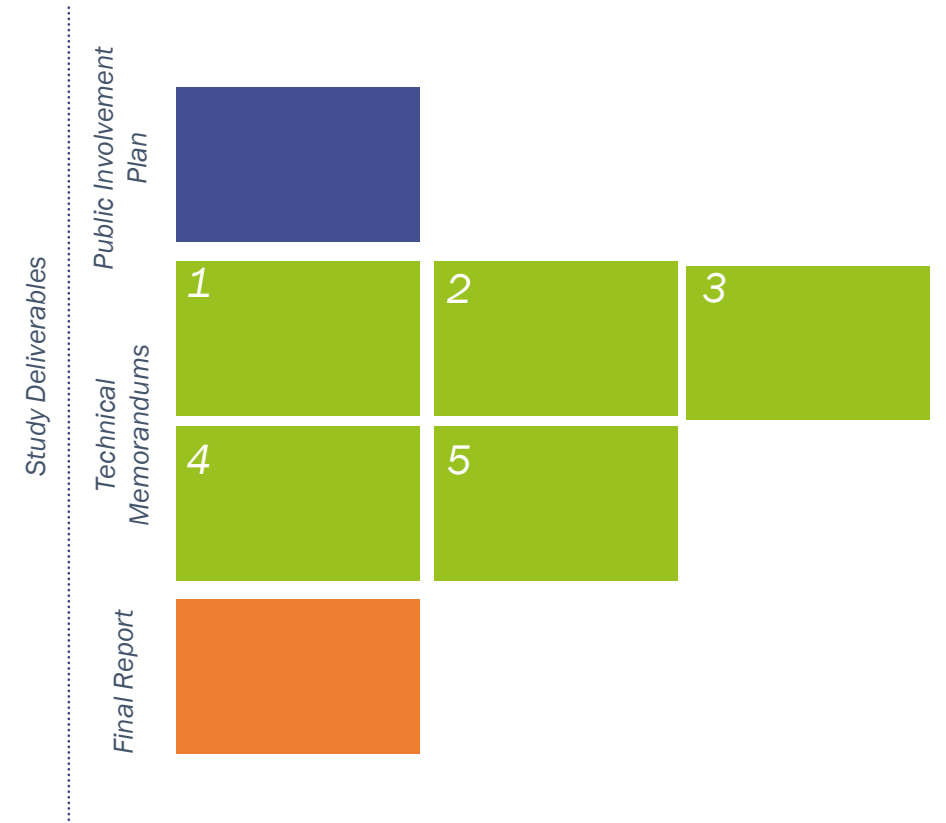
STUDY DELIVERABLES

Public Involvement Plan

Five Tech Memos: *Existing Conditions, Methodology, Traffic Analysis, Concept Alternative Development, and Analysis*

Final Report:

- Short-term actions, and
- Long-term design and implementation



STUDY TIMELINE *TENTATIVE*

STUDY PHASES	Months from Notice to Proceed																	
	1	2	3	4	5	6	7	8	9	10	11	12	13	14	15	16	17	18
	Sep-20	Oct-20	Nov-20	Dec-20	Jan-21	Feb-21	Mar-21	Apr-21	May-21	Jun-21	Jul-21	Aug-21	Sep-21	Oct-21	Nov-21	Dec-21	Jan-22	Feb-22
STUDY PHASES	Phase 1. Opportunities												Phase 3. Solutions					
TASK 1 Project Management	■	■	■	■	■	■	■	■	■	■	■	■	■	■	■	■	■	■
TASK 2 Intergovernmental Coordination				■								■				■		
TASK 3 Existing Data Collection and Analysis		■	■		■	■	1D	1F										
TASK 4 Project Traffic and Analysis					■	■	2D	2F	■	■	3D	3F						
TASK 5 Multimodal Conceptual Alternative Development												■	■	4D	4F			
TASK 6 Final Report																	■	■

Technical memoranda and Final Report (D=Draft, F=Final)

- 1 Existing Conditions Data Analysis
- 2 Traffic Methodology
- 3 Design Traffic
- 4 Conceptual Alternatives Development
- 5 Conceptual Alternatives Analysis

PROJECT IMPLEMENTATION PROCESS

FDOT's Project Development and Environment (PD&E):

- Planning
- Project Development & Environment
- Design
- Construction

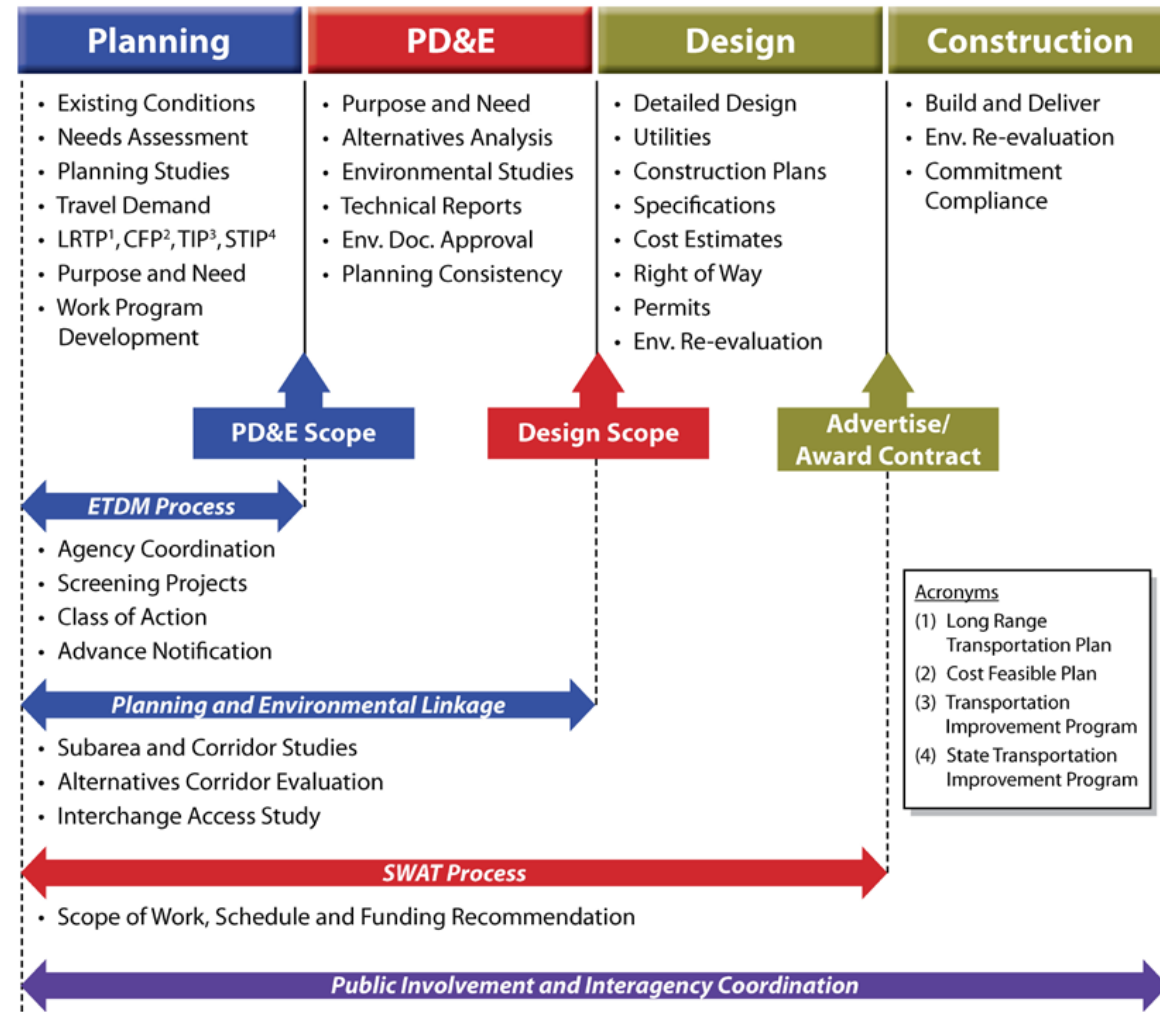


Diagram of FDOT's PD&E Process

Source: FDOT's Project Development and Environment Manual

PUBLIC INVOLVEMENT PLAN

Currently in development;
concepts include:

- Virtual Meetings (workshops, one-on-ones, meet where you are)
- Online survey
- Walking audit
- WikiMap



NEXT STEPS



**CONTINUE IN
LISTENING MODE**



**ENCOURAGE OPEN
CONVERSATION AND
DIALOGUE**



**MAINTAIN
INFORMATION LOOP**

CONTACT INFO

Tiffany Gehrke

Bicycle/Pedestrian Coordinator & ADA Coordinator
Planning & Environmental Management Office
Florida Department of Transportation, District 6
(305) 470-5308
Tiffany.Gehrke@dot.state.fl.us

Dan Hardy, P.E., PTP

Project Manager
Renaissance Planning
703-776-9922 x502
dhardy@ciesthatwork.com

Nicole Estevez

Deputy Project Manager
Renaissance Planning
786-220-1946 x158
nestevez@ciesthatwork.com