

INDIAN CREEK GREENWAY CONCEPT PLAN



A Scenic Trail Along A Historic Waterway

A special thanks to all those community participants who attended the public forums and dedicated their time and support to the project.

CREDITS:

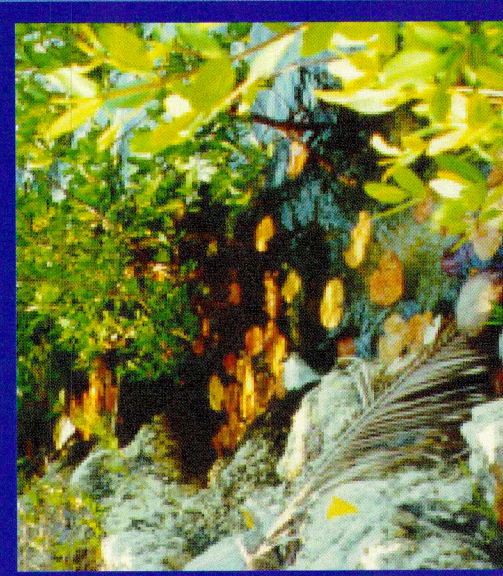
William Cary, Indian Creek Greenway Project Manager, City of Miami Beach Planning Department; Mercy LaMazares and Reuben Caldwell, City of Miami Beach Planning Department; Catherine Farmer and Jaime Doubek-Racine, National Park Service Rivers, Trails and Conservation Assistance Program; George Gomez, Bruce Henderson, Kevin Smith, Odalys Mon, Betty Fleming, Amelia Johnson, Matthew Schwartz, Joe Johnson, Janet Gavarette former Assistant City Manager, City of Miami Beach; Jay Manzella, Metropolitan Planning Organization; John Martinez, Felix Blanco, Dave Henderson, Florida Department of Transportation; Gary Milano, Miami Association, Inc. Department of Environmental Resources Management; Stuart Reed, Friends of the Indian Creek and Leonard A. Wien, Jr., Indian Creek Association; Melanie Muss, Fontainebleau Hilton.

For more information concerning the Indian Creek Greenway contact: William Cary, Indian Creek Greenway, Project Manager, City of Miami Beach Planning Department, 1700 Convention Center Drive, Miami Beach, FL 33139, 305.673.7000, FAX 305.673.7559, web sites: City of Miami Beach, <http://cityofmiami-beach.fl.us>, Leonard Wien, Jr., President, Indian Creek Association, Inc. <http://www.ica.net/~law/icsw/index.htm>, National Park Service <http://www.nps.gov/rtca>, Catherine Farmer, National Park Service, Rivers, Trails and Conservation Assistance Program, 1924 Building, 100 Alabama Street, Atlanta, GA 30303, 404.562.3175.

Graphics: EDAW, Inc., National Park Service
Text and Photographs: EDAW, Inc., City of Miami Beach,
Indian Creek Association and National Park Service

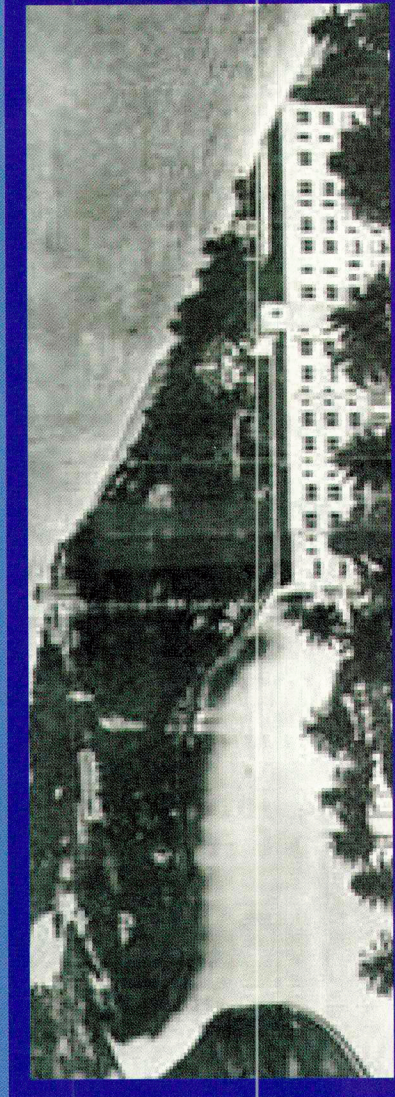


Indian Creek is a natural estuary lagoon extending approximately four miles from Biscayne Bay into the heart of the Miami Beach barrier island. It has a rich history dating back to the indigenous coastal Indian tribes of South Florida who were already established when Juan Ponce de Leon sailed the length of Florida in 1513.



2 Desirable Mangrove Habitat

Just as John Collins utilized a natural estuary lagoon as a principle way of transporting delicate avocados and mangos to Biscayne Bay and bringing building materials back to what would become "The Billion Dollar Sandbar", Indian Creek today continues its extraordinary role as an evolving natural and manmade vision for this vibrant urban community.



3 Lake Pancoast with old Wofford Hotel



1 Local Habitat includes Mangroves, Palms, Buttonwoods and Oaks

The Indian Creek Greenway is part of a much larger system with future links to additional greenways both north and to the south as well as to future created linkages from east to west, providing pedestrian connections from the creek to the beach.



7 Creekside Park opposite Beach View Park Gateway

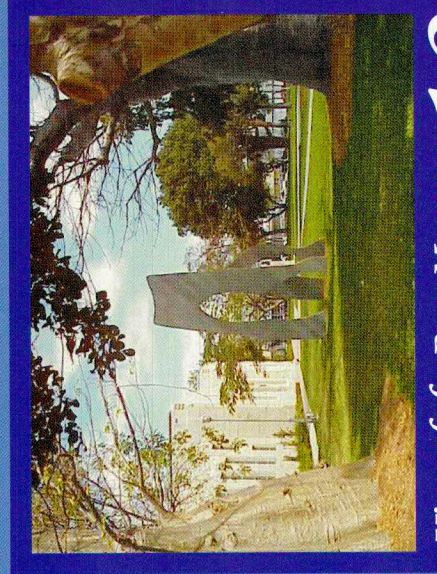
The larger vision for the Indian Creek Greenway also includes beautification, enhanced pedestrian safety, access points, as well as traffic calming for numerous east to west or creek to beach connections along the corridor.



8 Ocean Boardwalk paralleling Indian Creek

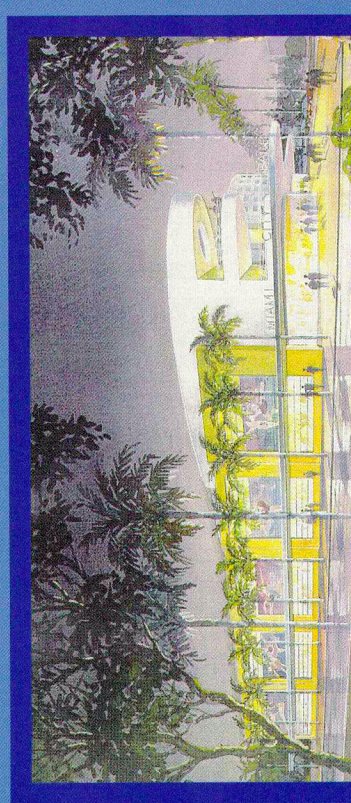


9 View of the 41st Street Gateway Bridge



10 View of the Bass Museum at Collins Park Gateway

The common characteristics of greenways are that they all lead somewhere and typically link special natural areas or cultural and historical points of interest.



11 View of the Miami City Ballet Building

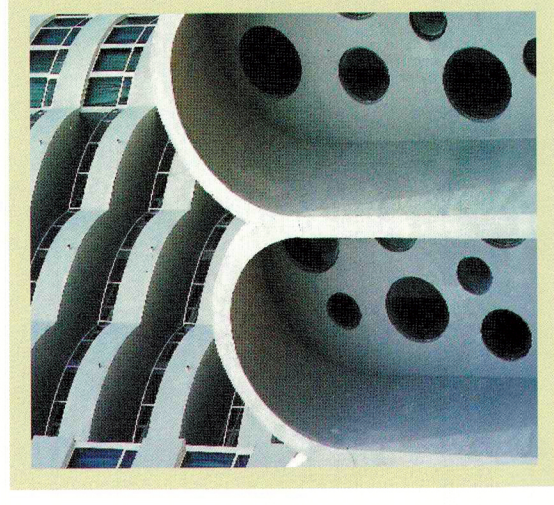
The purpose of this project is to develop a plan for a 2.5-mile greenway (linear park) along the eastern shore of the historic Indian Creek located within the City of Miami Beach, Florida. The proposed greenway will begin south at the future proposed Collins Park Gateway at 21st Street ending at 55th Street to the north.

MISSION STATEMENT

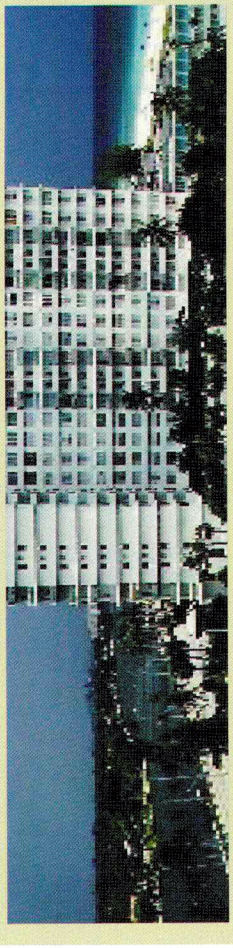
To create a linear park along the historic Indian Creek that will sensitively develop the natural and aesthetic assets of the shoreline as well as to provide opportunities for recreation, environmental education and pedestrian/non-motorized transportation.



Full of life

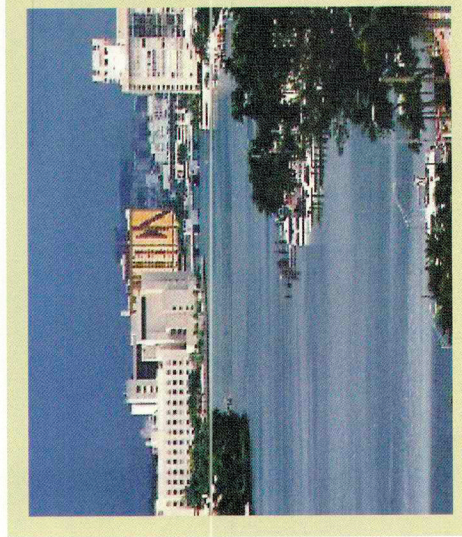


Historic, stylish and unique



Creek to beach: a connected place

Indian Creek Greenway is a series of diverse places and linked spaces. It provides dynamic, interactive experiences of the Creek and Beach, the culture and history, and the vibrant urban life at Miami Beach.



going with the flow

Indian Creek Greenway is the backbone of Miami Beach, providing a tranquil oasis and focus for activity and interaction with the people and North Beach and to other resources and attractions.

Indian Creek Greenway celebrates all that is truly unique about Miami Beach.

CITIZEN INVOLVEMENT

The Indian Creek Greenway Advisory Committee was formed in January 1999 as a partnership between the City of Miami Beach, the National Park Service, Rivers, Trails and Conservation Assistance Program, and several community leaders including Stuart Reed, a Miami Beach attorney and environmental advocate and Leonard A. Wien, Jr., President of the Indian Creek Association.



For two years the Indian Creek Greenway Citizens Advisory Committee and Planning Team have met to participate in the planning and design of the Indian Creek Greenway. This group of diverse and dedicated individuals have created a realistic vision for the linear park trail and will continue working on project implementation in the coming years. The full Committee and Team are listed in the credits.

One of the primary goals of the Citizens Advisory Committee and the Planning Team was to ensure public involvement into the planning process. Several public forums were held to engage the community in the planning of the Greenway.

The first public forum was held in November 1999 with over 80 attendees participating in mapping exercises and planning of the greenway development. The second forum, with approximately 100 attendees, was held in June 2000 with the results and analysis of the Indian Creek Greenway trail plan on display for public review and comment.



Indian Creek Greenway Public Forum, Fontainebleau Hilton



Second Public Forum, Miami Beach Botanical Gardens

INDIAN CREEK GREENWAY

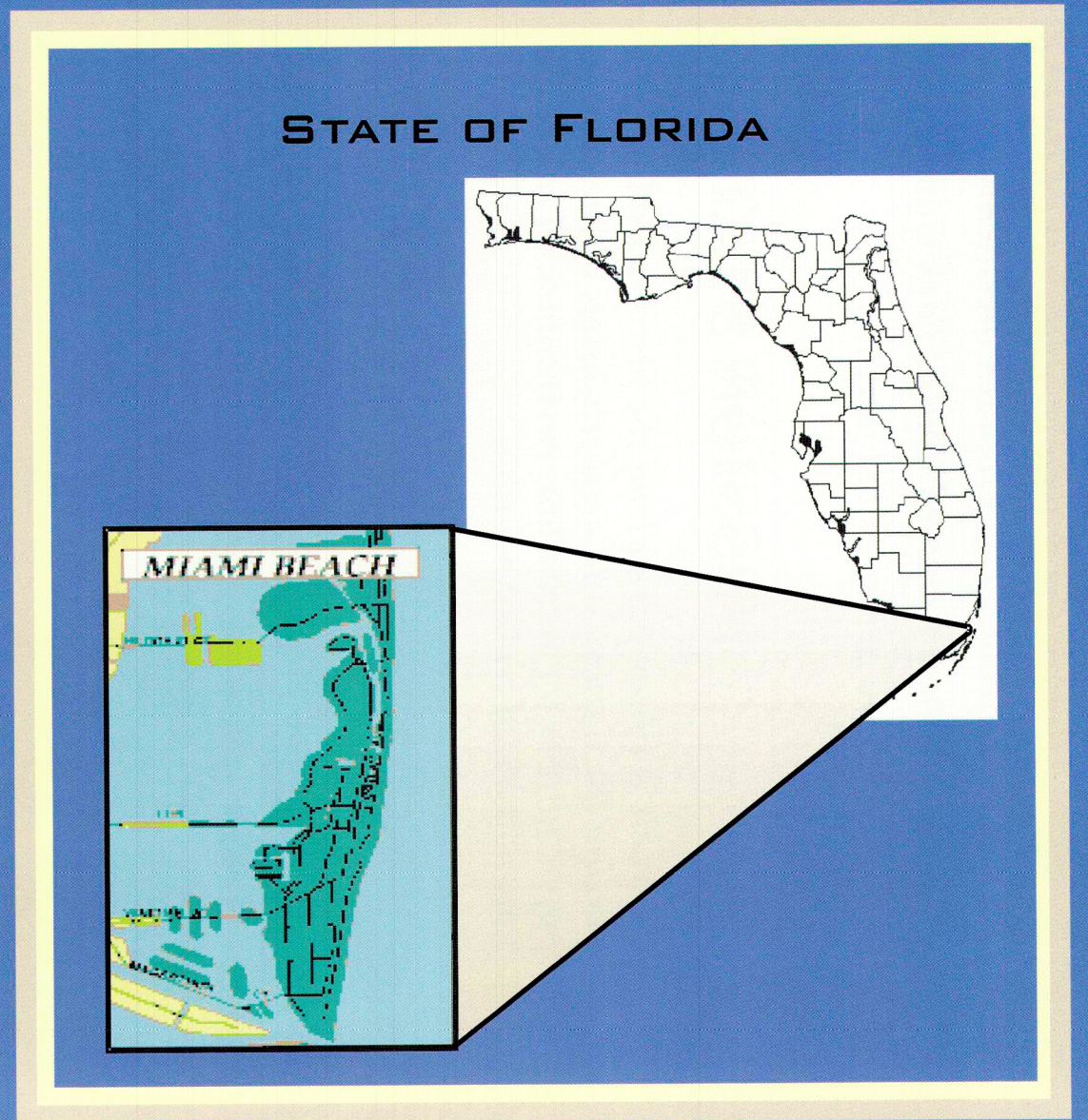
CONCEPT PLAN MAP

LEGEND

- Gateway- Major activity node. Primary public access area. High activity areas. Welcome and orientation areas.
- Passive Activity Nodes- Interest Points. To serve as trail resting areas.
- Existing Community Parks/Open Space
- Points of Interest/Notable Reference Locators
- Parking
- Proposed Trail
- Proposed Trail Route "B"
- Other Trail/Pedestrian Projects
- Other Trail Projects- Future Connection
- Creek to Beach Access
- Water Trail
- (P) Proposed
- (E) Existing
- Other Focal Sites
- Cantilever/Boardwalk

Points of Interest/Notable Reference Locators Key:

- | | |
|------------------------------------------|--------------------------------------------|
| 1) Colony Theater | 11) Miami Beach Regional Public Library |
| 2) Art Center South Florida | 12) Miami City Ballet |
| 3) Lincoln Theater/ New World Symphony | 13) Panoast Park |
| 4) Jackie Gleason Theater | 14) Wofford Park |
| 5) Municipal Building | 15) Pine Tree Park |
| 6) Miami Beach City Hall | 16) Fontainebleau Hilton |
| 7) Botanical Gardens/ Holocaust Memorial | 17) Eden Roc |
| 8) Convention Center | 18) Indian Beach Park |
| 9) Bass Museum of Art | 19) Beach View Park |
| 10) Collins Park | 20) Brittany Bay Park |
| | 21) Allison Park |
| | 22) Shane Watersports Center & Rowing Club |



ATLANTIC OCEAN

BEACH VIEW PARK GATEWAY (53RD STREET)

- Information Kiosk w/ Trail Maps (P)
- Concessions at Beach (P)
- Bike Racks (P)
- Drinking Water Fountains at Beach (E)
- Trail Signage (P)
- Parking at Beach (E)
- Landscaping (P)
- Enhanced Connection to Beach (P)
- Public Art (P)
- Playground & Exercise Facilities at Beach (P)
- Public Restrooms & Phones at the Beach (E)

PINE TREE PARK OVERLOOK

- Environmental, Historical and Cultural Learning Node (P)
- Scenic Viewing Node (P)
- Canoe/Kayak Rental (P)
- Public Dock Area (P)
- Water Shows (P)
- Light up the Park (P)

MANGROVE POINT (35TH STREET)

- Environmental, Historical and Cultural Learning Node (P)
- Scenic Viewing Node (P)
- Scenic Overlook (P)
- Bus Stop (E)
- Bus Shelter (P)
- Mangroves (E)

SEVILLE PLAZA (29TH)

- Scenic Viewing Node (P)
- Bus Stop (E)
- Bus Shelter (P)
- Enhanced Creek to Beach Connection (P)
- Restrooms/Showers at Beach (E)
- Pocket Parks on both sides of Footbridge (P)
- Possible Canoe/Kayak neighborhood launch at the base of Footbridge (P)

LAKE PANCOAST LOOKOUT

- Environmental, Historical and Architectural Node (P)
- Scenic Viewing (P)
- Canoe/Kayak Rental (P)
- Water Events (P)
- Structural Artistic Water Fall/Fountain (P)
- Historical Marker/Interpretative Sign (P)
- Benches (P)
- Banana Bungalow- Create Mangrove Island/Area @ Lake Panoast, soften Shoreline, use Rip-Rap or Seawall Boulder Enhancement
- Dredge Lake Panoast (P) restore Mangrove Habitat after Lake Dredging (P)

INDIAN BEACH PARK NODE (46TH STREET)

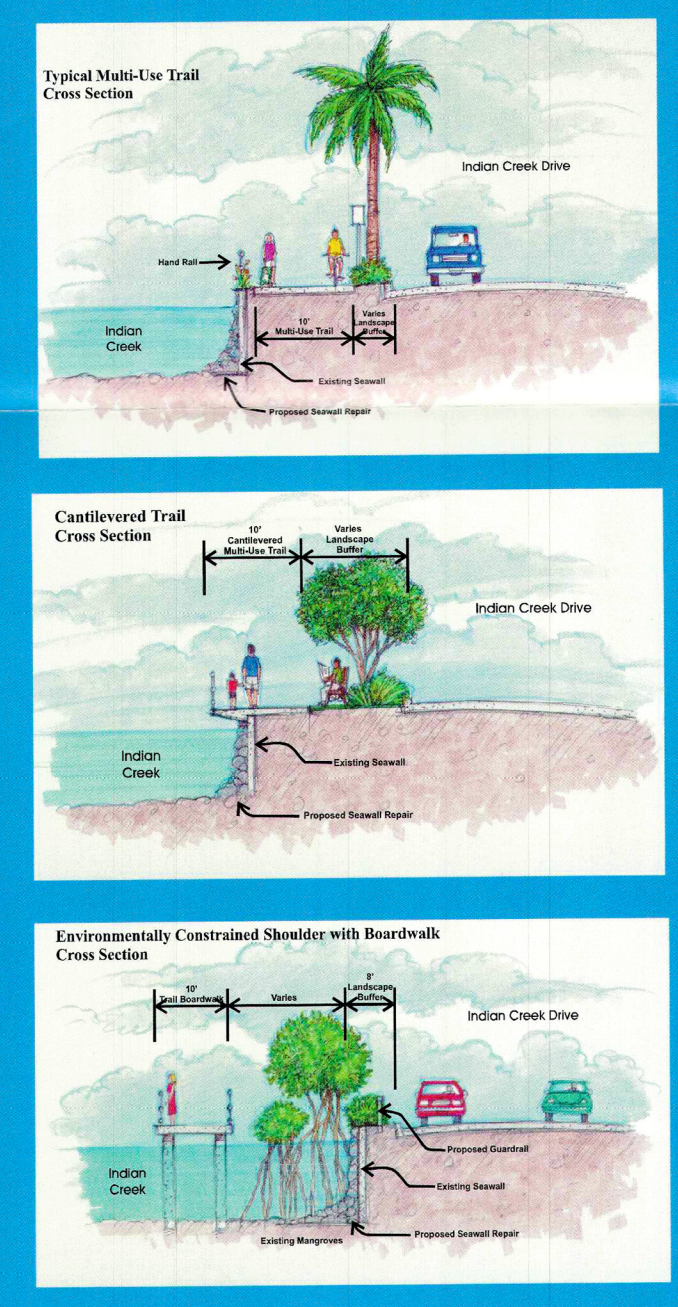
- Enhanced existing Concessions at the Beach (P)
- Bike Racks (P)
- Drinking Water Fountains (P)
- Gondolas/Water Taxis (P)
- Trail/Educational Signage (P)
- Parking at Beach (E)
- Restrooms at Beach (E)
- Playground at the Beach (P)
- Public Art at the Beach (P)
- Enhanced Landscaping (P)
- Enhanced Connection to Beach (P)
- ElectroWave Pick Up/Drop Off (P)
- Public Phones at the Beach (P)
- Traffic Calming Techniques (P)
- Fishing Piers (P)
- Steps Down to Creek (P)
- Floating Dock (P)
- Proposed Parking Garage (Environmentally friendly) (P)
- Enhanced Concessions at Beach (P), some Concessions at Beach (E)
- Trees to buffer Traffic Noise (P)
- Floating Dock (P)

41ST STREET GATEWAY

- Bike Racks (P)
- Drinking Water Fountains (P)
- Marker only, Trail Signage (P)
- Enhanced Landscaping, offering Shade & Buffers from Traffic (P)
- Creation of Pocket Park (P)
- Public Phones & Restrooms at the Beach (E)
- Bridge Lighting (P)
- Bus Stop (E)
- Viewing of Marine Habitat, on expanded Pedestrian Area between 40th & 41st (P)
- Street Trees (P)
- Enhancement of 41st Bridge with Bike/Ped Lane (P)
- Rip-Rap, Shoreline Enhancement Mangrove Area (P)

COLLINS PARK GATEWAY

- Information Kiosk w/Trail Maps (P)
- Concessions near Beach (P)
- Bike Racks (P)
- Drinking Fountains (P)
- Trail Signage (P)
- Public Restrooms on Beach (E)
- Public Phones on Beach (E)
- Parking (E), maybe converted into Collins Park Greenspaces/Park & Outdoor Performance Space (P)
- Parking Garage (P)
- Canoe/Kayak Launch after 1st Footbridge Liberty/Collins Canal (P)
- Enhanced Pedestrian Connection to Collins Ave. from Liberty through Rental Car Lot (P)
- Enhanced Connection to Beach "Beach to Creek Access"
- Traffic Calming (P)
- Bus Stop (E)
- Landscaping with Native Vegetation- Mangroves etc., and Exotic Removal adjacent to 1st Footbridge (P)
- Public Art (P)
- Adjacent to 1st Footbridge, establishment of Small Pocket Park (P)
- Community Cleanup of Debris (P)



- Cantilever out or boardwalk FDOT project-40th to 41st
- In and out boardwalk 30th to 35th- tight space
- 24th to 27th Street cantilever out or boardwalk

- #### Additional Comments & Site Design Elements
- Proposed trail Route "A" - Walking trail Route "A" along Liberty Avenue to Collins Canal footbridge then along Lake Panoast Drive to Lake Panoast footbridge to Collins Avenue.
 - Proposed trail Route "B" - ADA accessible Route "B" from Liberty Avenue through car rental lot between 23rd and 24th Streets to Collins Avenue.
 - Existing mangrove communities along the Indian Creek corridor should be preserved.
 - Revegetation of native trees and low maintenance plants is recommended for the entire length of the corridor, as well as shade trees.
 - Care should be taken to maintain sensitive marine and shoreline habitats during all phases of the planning & design process.
 - Portions of the existing seawall are deteriorated. The seawall should be reconstructed with the use of softened shoreline and rip-rap alternatives.
 - The "ElectroWave" system should be incorporated in the planning of the trail route.
 - Shade should be incorporated into all Gateways & Nodes
 - Educational and interpretative signage should be throughout the greenway corridor.
 - Traffic calming devices should be used for all "Creek to Beach" connections throughout the corridor.
 - Exotic removal of invasive nuisance species should occur throughout the entire corridor, such as Brazilian pepper, Australian pine and Mahoe.

SCALE: Not to scale