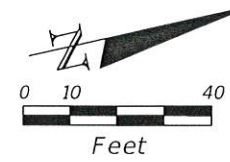


**LEGEND**

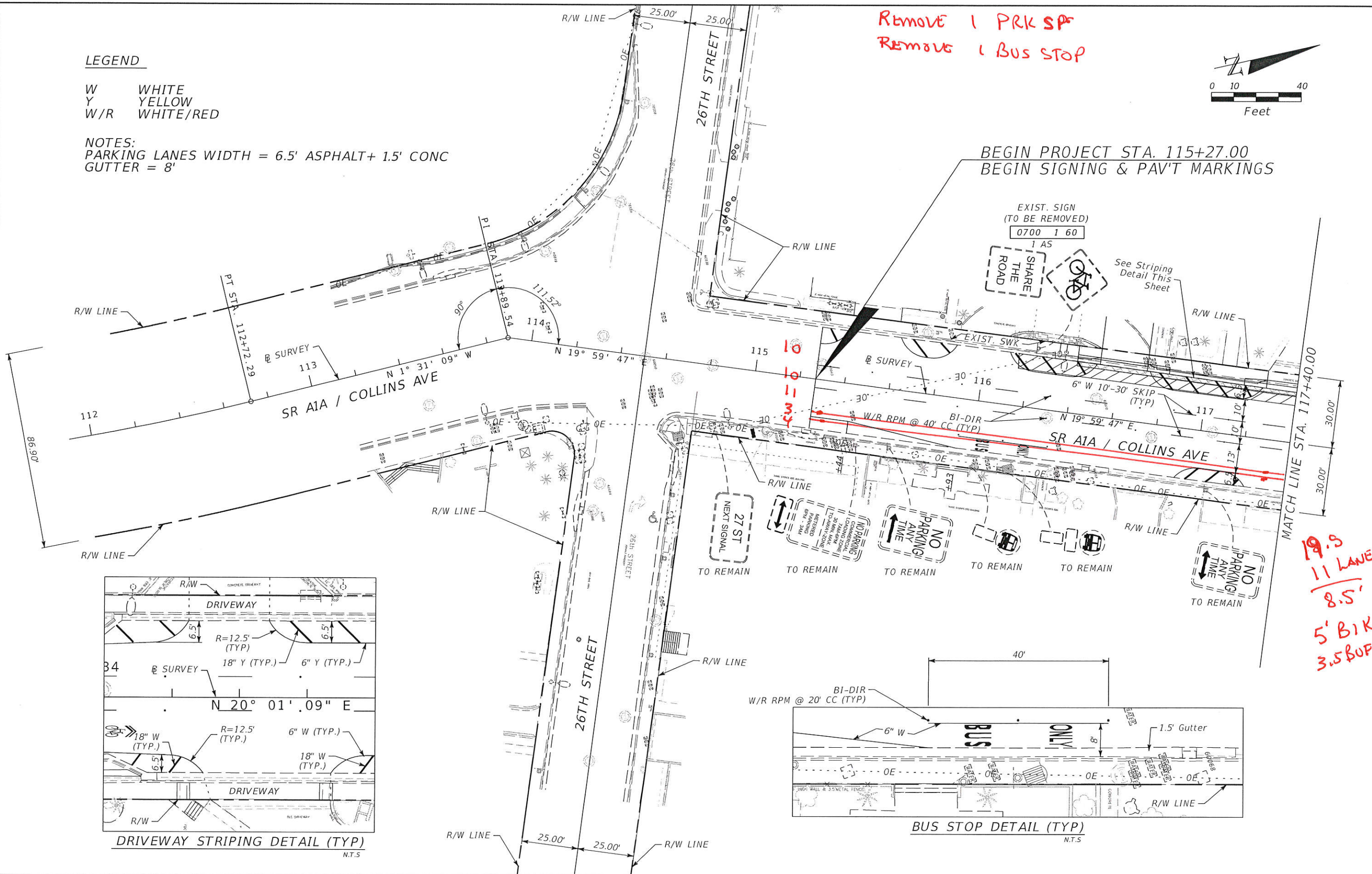
W WHITE  
 Y YELLOW  
 W/R WHITE/RED

NOTES:  
 PARKING LANES WIDTH = 6.5' ASPHALT+ 1.5' CONC  
 GUTTER = 8'

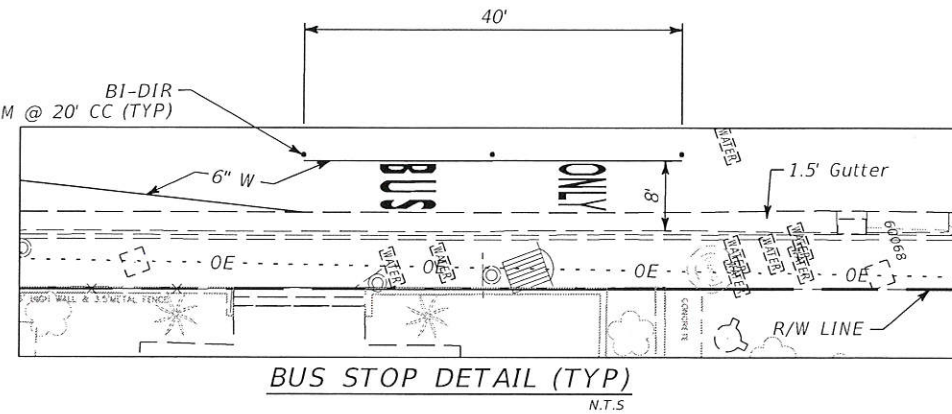
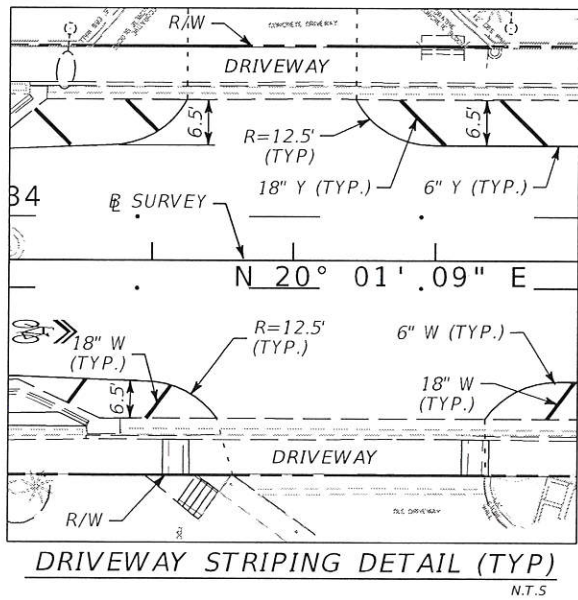


Remove 1 PRK SP  
 Remove 1 BUS STOP

BEGIN PROJECT STA. 115+27.00  
 BEGIN SIGNING & PAV'T MARKINGS



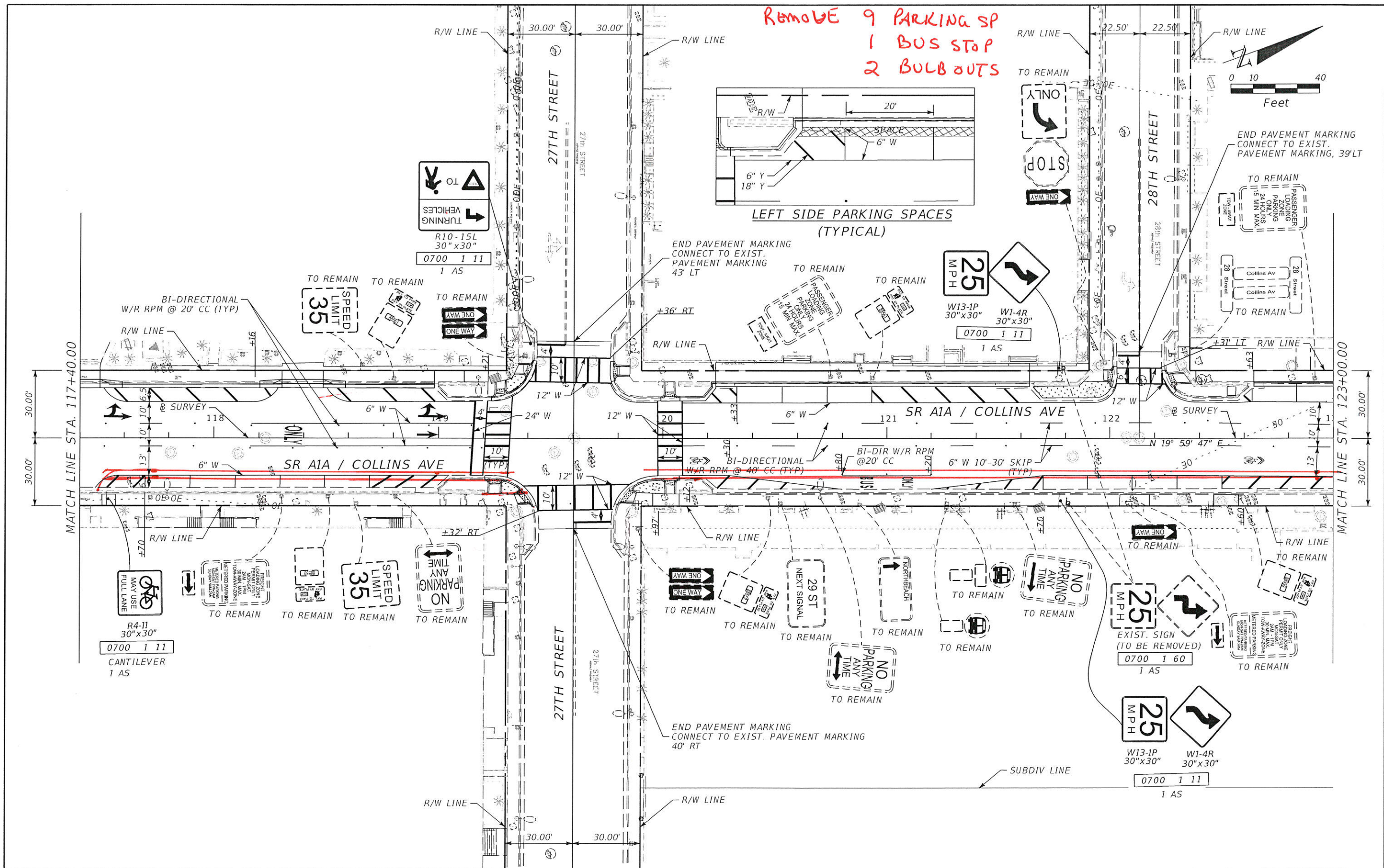
19.5  
 11 LANE  
 8.5'  
 5' BIKE  
 3.5' BUFFER



REVISIONS				LINDA M. BELL, P.E. FL P.E. LICENSE NUMBER 38542 CIVIL WORKS, INC. 8491 N.W. 17 STREET, SUITE 108 DORAL, FLORIDA 33126 305-591-4323	STATE OF FLORIDA DEPARTMENT OF TRANSPORTATION			SIGNING AND PAVEMENT MARKINGS	SHEET NO. S-5
DATE	DESCRIPTION	DATE	DESCRIPTION		ROAD NO.	COUNTY	FINANCIAL PROJECT ID		
					SR A1A	MIAMI-DADE	443902-1-52-01		

THE OFFICIAL RECORD OF THIS SHEET IS THE ELECTRONIC FILE DIGITALLY SIGNED AND SEALED UNDER RULE 61G15-23.004, F.A.C.

REMOVE 9 PARKING SP  
1 BUS STOP  
2 BULB OUTS



REVISIONS			
DATE	DESCRIPTION	DATE	DESCRIPTION

LINDA M. BELL, P.E.  
FL P.E. LICENSE NUMBER 38542  
CIVIL WORKS, INC.  
8491 N.W. 17 STREET, SUITE 108  
DORAL, FLORIDA 33126 305-591-4323

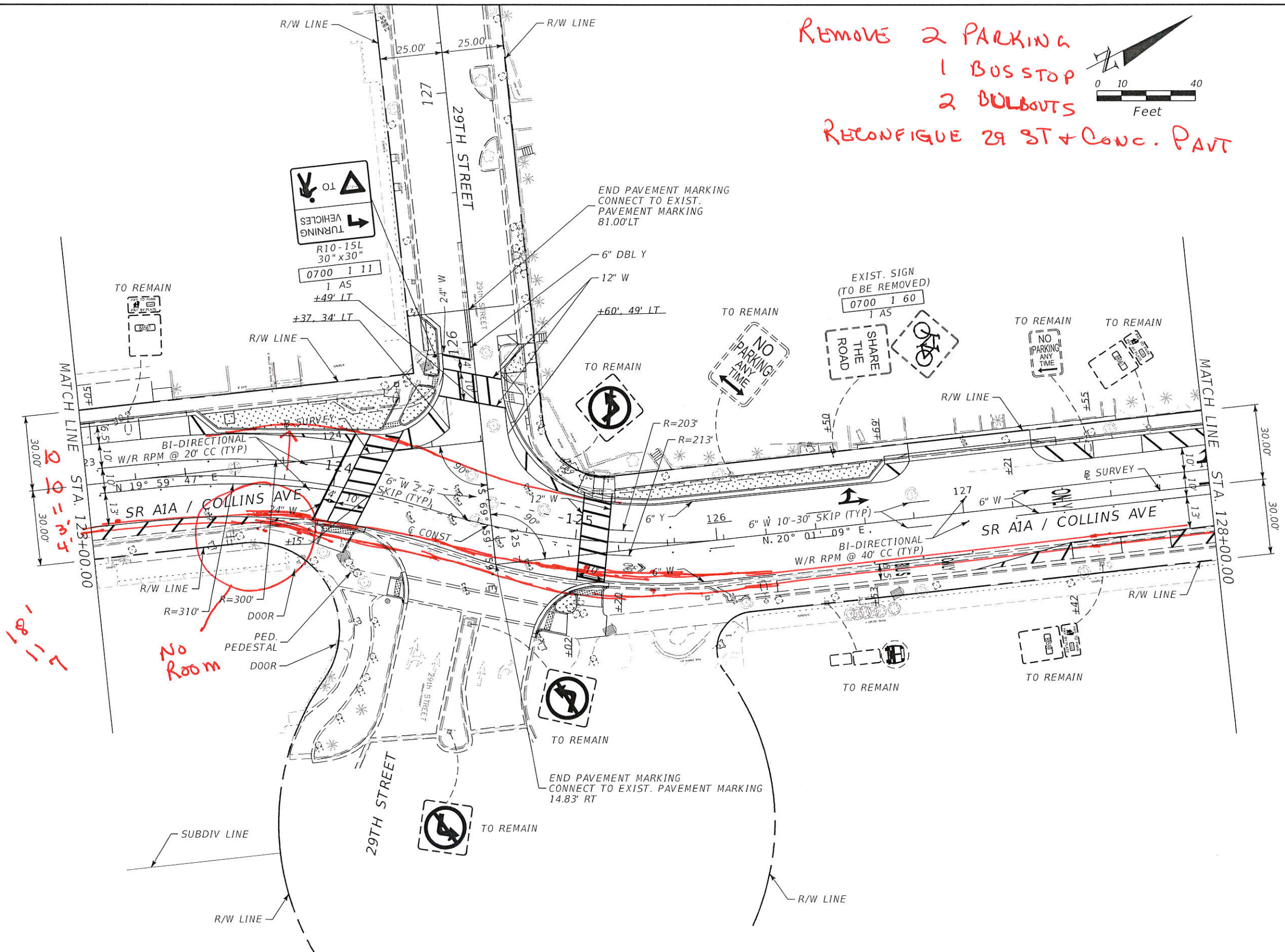
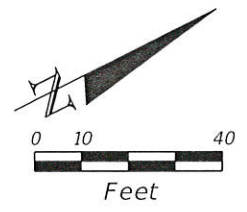
STATE OF FLORIDA DEPARTMENT OF TRANSPORTATION		
ROAD NO.	COUNTY	FINANCIAL PROJECT ID
SR A1A	MIAMI-DADE	443902-1-52-01

**SIGNING AND PAVEMENT  
MARKINGS**

SHEET  
NO.  
S-6

THE OFFICIAL RECORD OF THIS SHEET IS THE ELECTRONIC FILE DIGITALLY SIGNED AND SEALED UNDER RULE 61G15-23.004, F.A.C.

REMOVE 2 PARKING  
 1 BUS STOP  
 2 BULBOUTS  
 RECONFIGURE 29 ST + CONC. PAVT



No Room

18' 11"

REVISIONS			
DATE	DESCRIPTION	DATE	DESCRIPTION

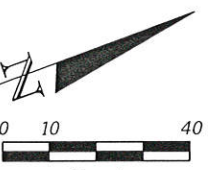
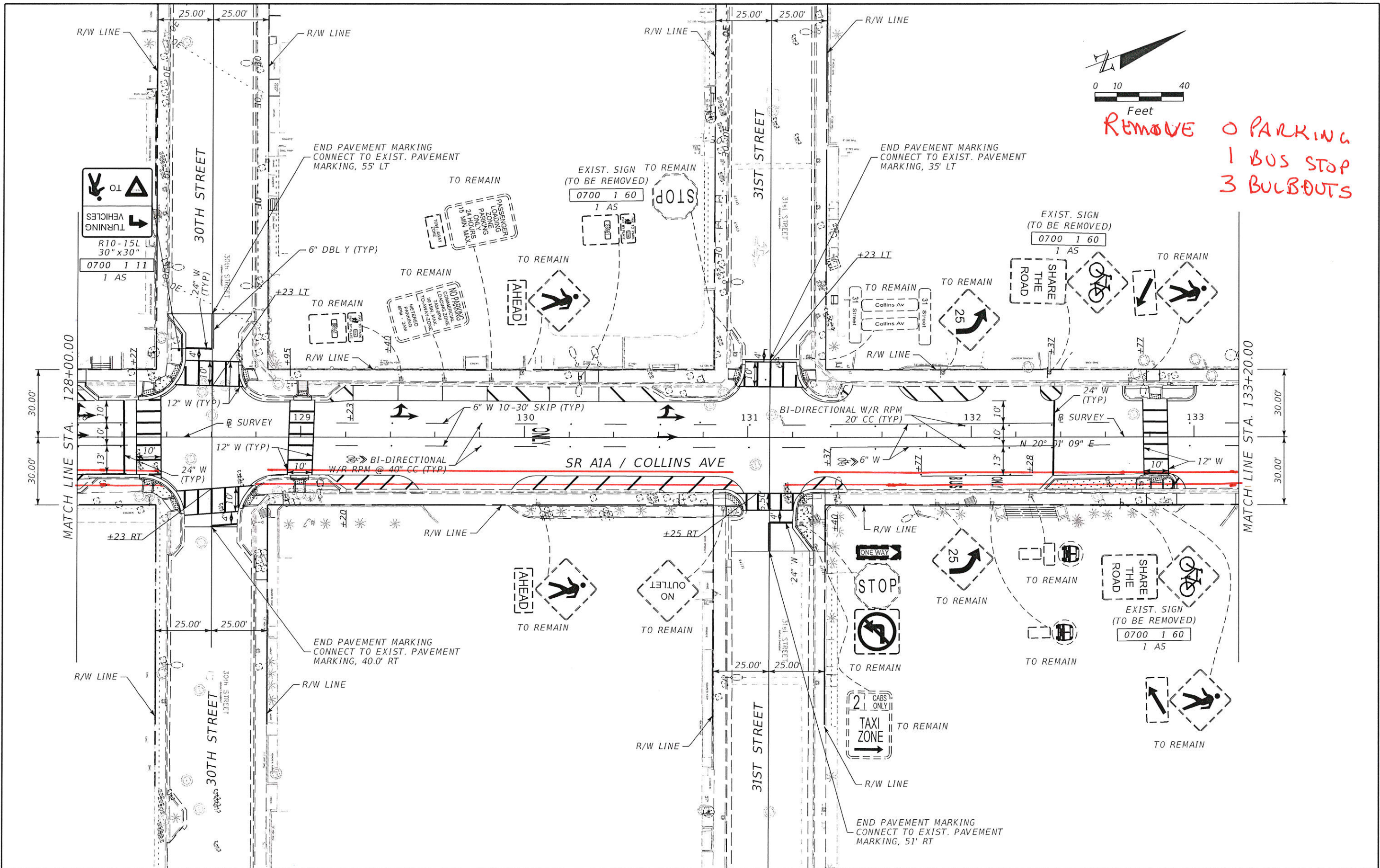
LINDA M. BELL, P.E.  
 FL P.E. LICENSE NUMBER 38542  
 CIVIL WORKS, INC.  
 8491 N.W. 17 STREET, SUITE 108  
 DORAL, FLORIDA 33126 305-591-4323

STATE OF FLORIDA DEPARTMENT OF TRANSPORTATION		
ROAD NO.	COUNTY	FINANCIAL PROJECT ID
SR A1A	MIAMI-DADE	443902-1-52-01

**SIGNING AND PAVEMENT  
 MARKINGS**

SHEET NO.  
 S-7

THE OFFICIAL RECORD OF THIS SHEET IS THE ELECTRONIC FILE DIGITALLY SIGNED AND SEALED UNDER RULE 61G15-23.004, F.A.C.



Remove  
 0 PARKING  
 1 BUS STOP  
 3 BULBOUTS

REVISIONS			
DATE	DESCRIPTION	DATE	DESCRIPTION

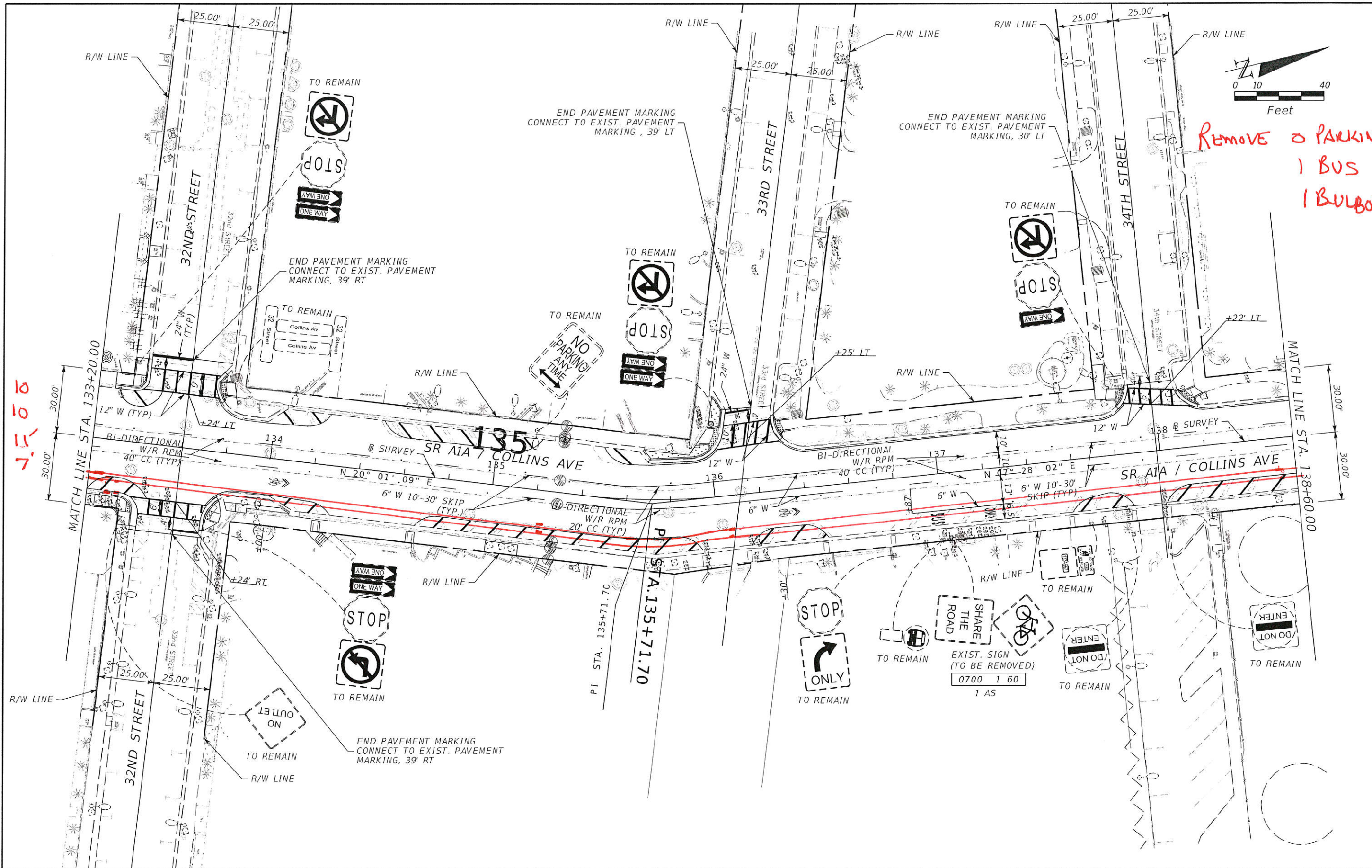
LINDA M. BELL, P.E.  
 FL P.E. LICENSE NUMBER 38542  
 CIVIL WORKS, INC.  
 8491 N.W. 17 STREET, SUITE 108  
 DORAL, FLORIDA 33126 305-591-4323

STATE OF FLORIDA DEPARTMENT OF TRANSPORTATION		
ROAD NO.	COUNTY	FINANCIAL PROJECT ID
SR A1A	MIAMI-DADE	443902-1-52-01

**SIGNING AND PAVEMENT  
MARKINGS**

SHEET NO.  
S-8

THE OFFICIAL RECORD OF THIS SHEET IS THE ELECTRONIC FILE DIGITALLY SIGNED AND SEALED UNDER RULE 61G15-23.004, F.A.C.



REVISIONS			
DATE	DESCRIPTION	DATE	DESCRIPTION

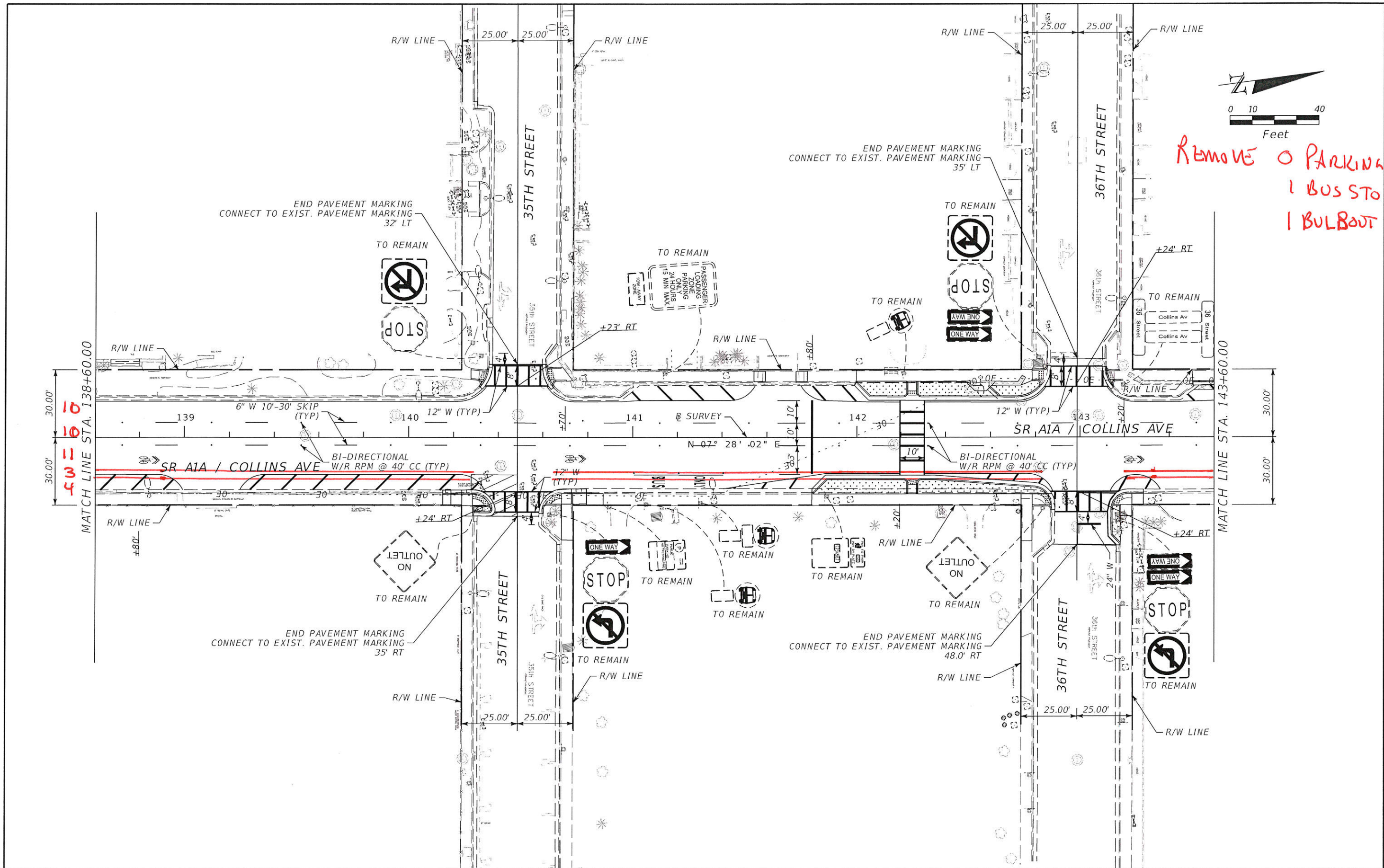
LINDA M. BELL, P.E.  
 FL P.E. LICENSE NUMBER 38542  
 CIVIL WORKS, INC.  
 8491 N.W. 17 STREET, SUITE 108  
 DORAL, FLORIDA 33126 305-591-4323

STATE OF FLORIDA DEPARTMENT OF TRANSPORTATION		
ROAD NO.	COUNTY	FINANCIAL PROJECT ID
SR A1A	MIAMI-DADE	443902-1-52-01

**SIGNING AND PAVEMENT  
MARKINGS**

SHEET NO.  
S-9

THE OFFICIAL RECORD OF THIS SHEET IS THE ELECTRONIC FILE DIGITALLY SIGNED AND SEALED UNDER RULE 61G15-23.004, F.A.C.



REMOVE 0 PARKING  
 1 BUS STOP  
 1 BULBOUT

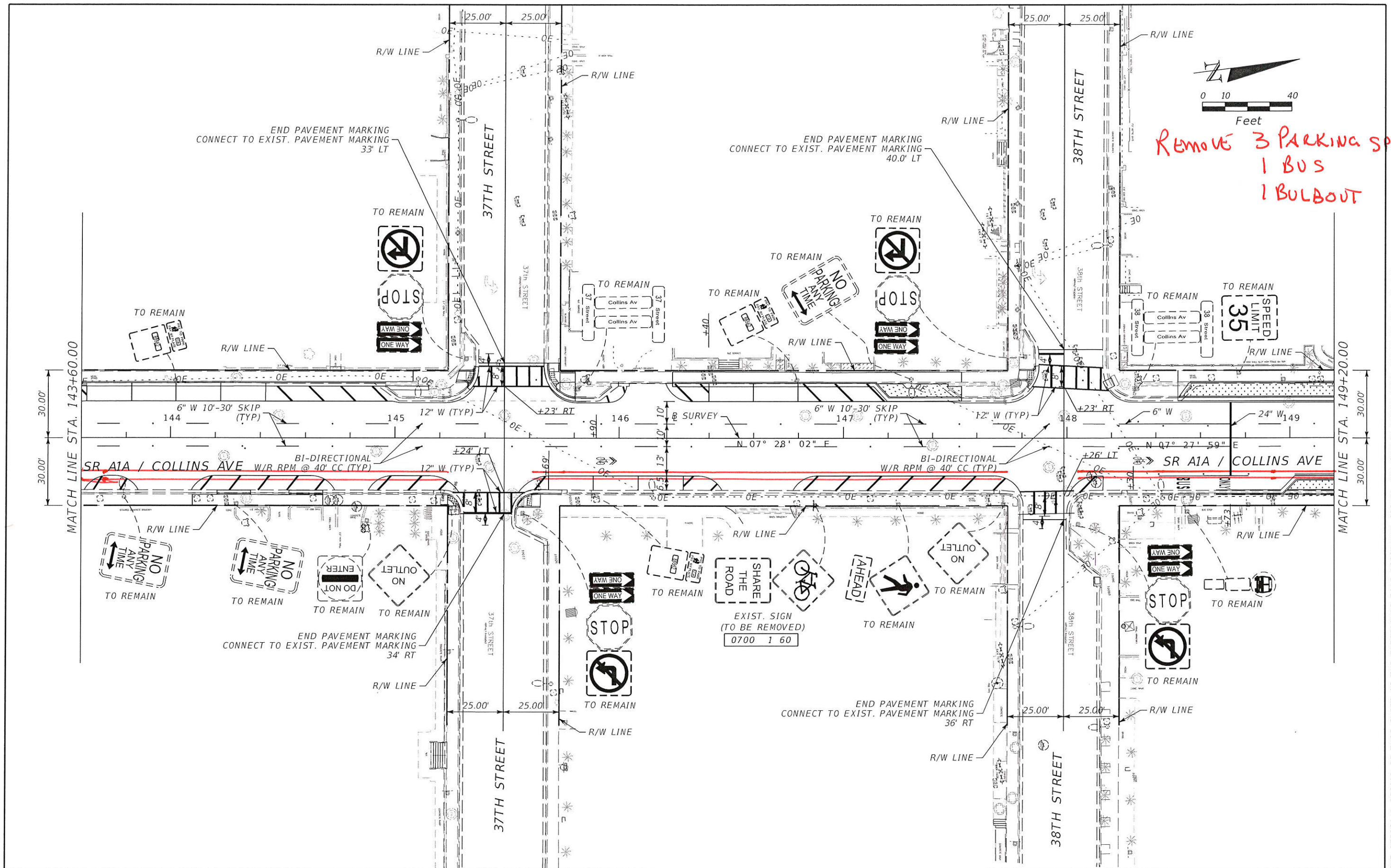
REVISIONS			
DATE	DESCRIPTION	DATE	DESCRIPTION

LINDA M. BELL, P.E.  
 FL P.E. LICENSE NUMBER 38542  
 CIVIL WORKS, INC.  
 8491 N.W. 17 STREET, SUITE 108  
 DORAL, FLORIDA 33126 305-591-4323

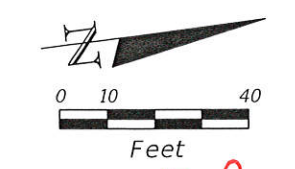
STATE OF FLORIDA DEPARTMENT OF TRANSPORTATION		
ROAD NO.	COUNTY	FINANCIAL PROJECT ID
SR A1A	MIAMI-DADE	443902-1-52-01

**SIGNING AND PAVEMENT  
 MARKINGS**

SHEET NO.  
 S-10



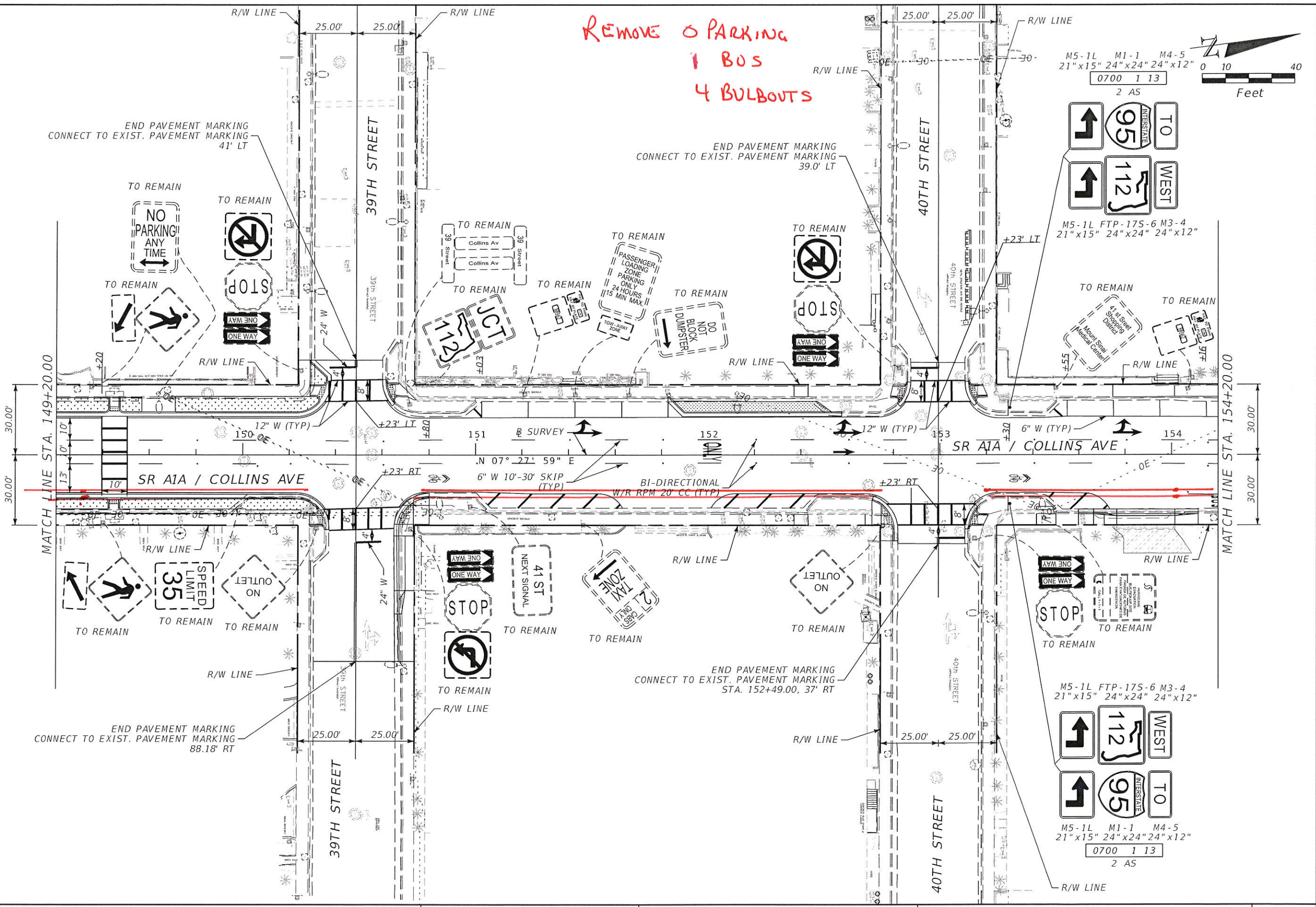
Remove 3 Parkings  
1 BUS  
1 BULBOUT



REVISIONS				LINDA M. BELL, P.E. FL P.E. LICENSE NUMBER 38542 CIVIL WORKS, INC. 8491 N.W. 17 STREET, SUITE 108 DORAL, FLORIDA 33126 305-591-4323	STATE OF FLORIDA DEPARTMENT OF TRANSPORTATION			SHEET NO. S-11
DATE	DESCRIPTION	DATE	DESCRIPTION		ROAD NO.	COUNTY	FINANCIAL PROJECT ID	
					SR A1A	MIAMI-DADE	443902-1-52-01	

THE OFFICIAL RECORD OF THIS SHEET IS THE ELECTRONIC FILE DIGITALLY SIGNED AND SEALED UNDER RULE 61G15-23.004, F.A.C.

REMOVE 0 PARKING  
1 BOS  
4 BULBOUTS



REVISIONS			
DATE	DESCRIPTION	DATE	DESCRIPTION

LINDA M. BELL, P.E.  
FL P.E. LICENSE NUMBER 38542  
CIVIL WORKS, INC.  
8491 N.W. 17 STREET, SUITE 108  
DORAL, FLORIDA 33126 305-591-4323

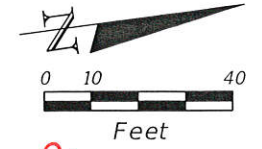
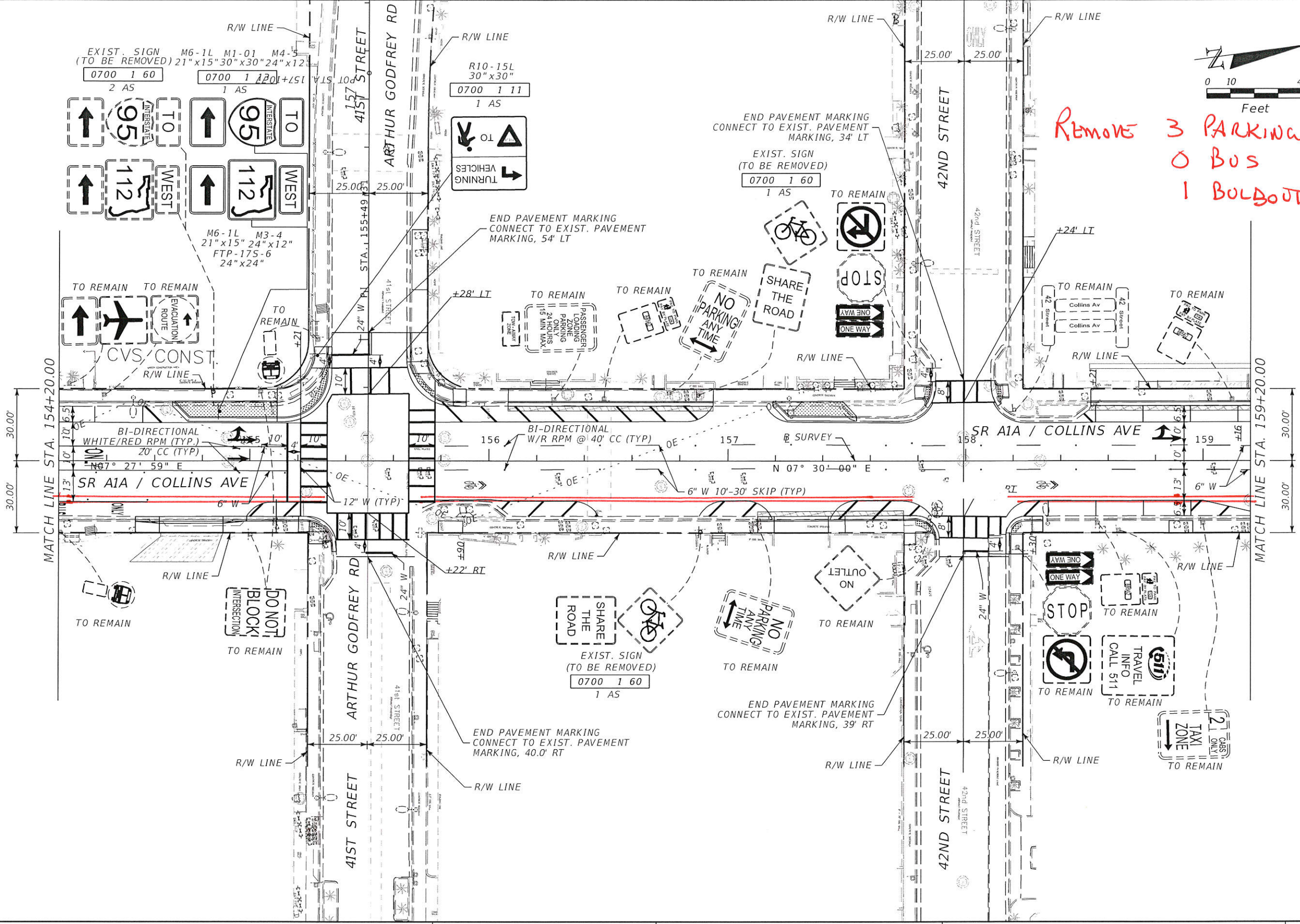
STATE OF FLORIDA DEPARTMENT OF TRANSPORTATION		
ROAD NO.	COUNTY	FINANCIAL PROJECT ID
SR A1A	MIAMI-DADE	443902-1-52-01

**SIGNING AND PAVEMENT  
MARKINGS**

SHEET NO.  
S-12

THE OFFICIAL RECORD OF THIS SHEET IS THE ELECTRONIC FILE DIGITALLY SIGNED AND SEALED UNDER RULE 61G15-23.004, F.A.C.



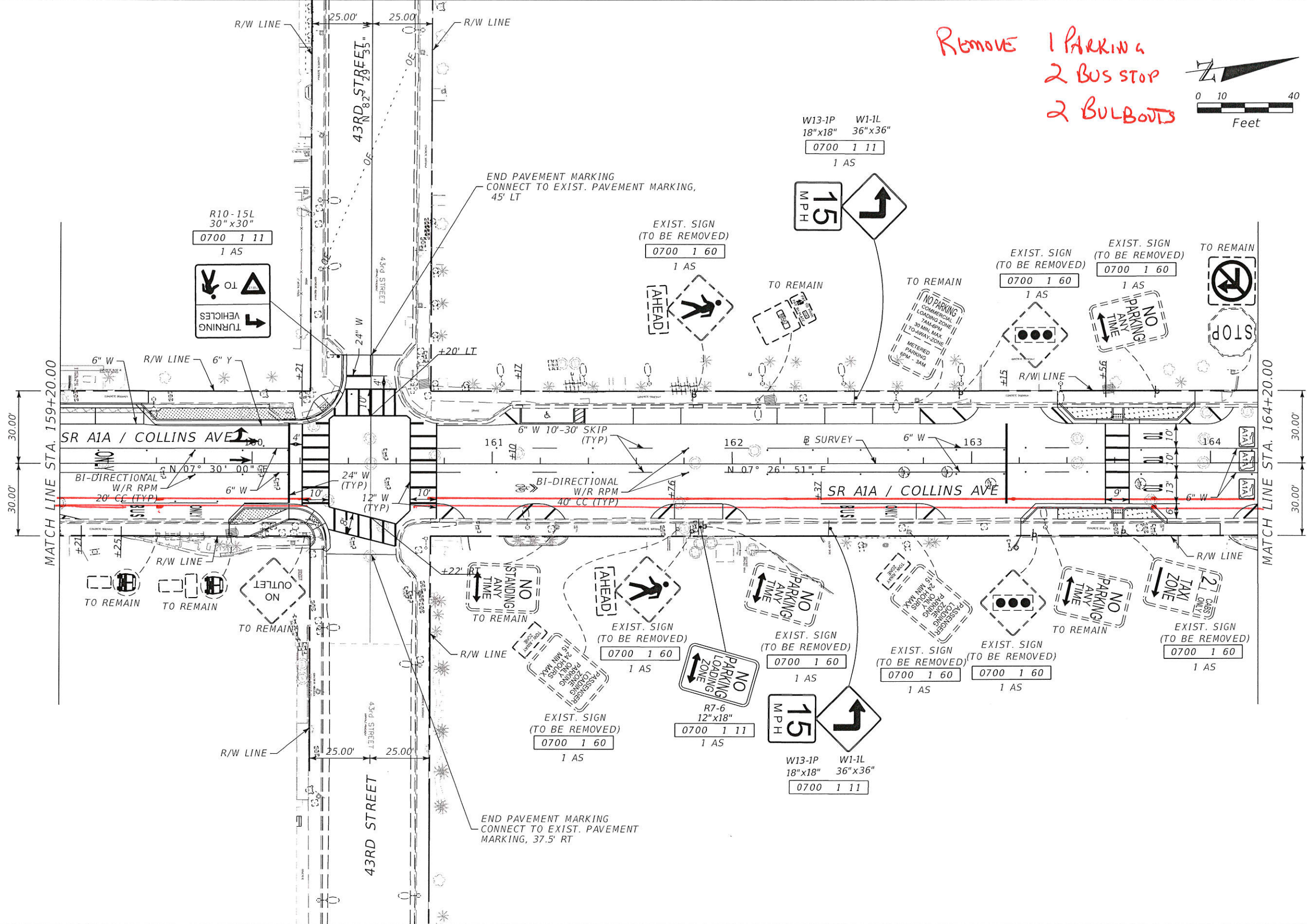
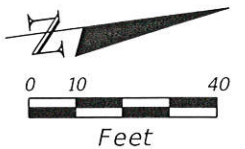


**Remove 3 PARKING SP  
0 BUS  
1 BOLDBOUT**

REVISIONS				LINDA M. BELL, P.E. FL P.E. LICENSE NUMBER 38542 CIVIL WORKS, INC. 8491 N.W. 17 STREET, SUITE 108 DORAL, FLORIDA 33126 305-591-4323	STATE OF FLORIDA DEPARTMENT OF TRANSPORTATION			<b>SIGNING AND PAVEMENT MARKINGS</b>	SHEET NO.
DATE	DESCRIPTION	DATE	DESCRIPTION		ROAD NO.	COUNTY	FINANCIAL PROJECT ID		
					SR A1A	MIAMI-DADE	443902-1-52-01		S-13

THE OFFICIAL RECORD OF THIS SHEET IS THE ELECTRONIC FILE DIGITALLY SIGNED AND SEALED UNDER RULE 61G15-23.004, F.A.C.

REMOVE 1 PARKING  
2 BUS STOP  
2 BULBOUTS



REVISIONS			
DATE	DESCRIPTION	DATE	DESCRIPTION

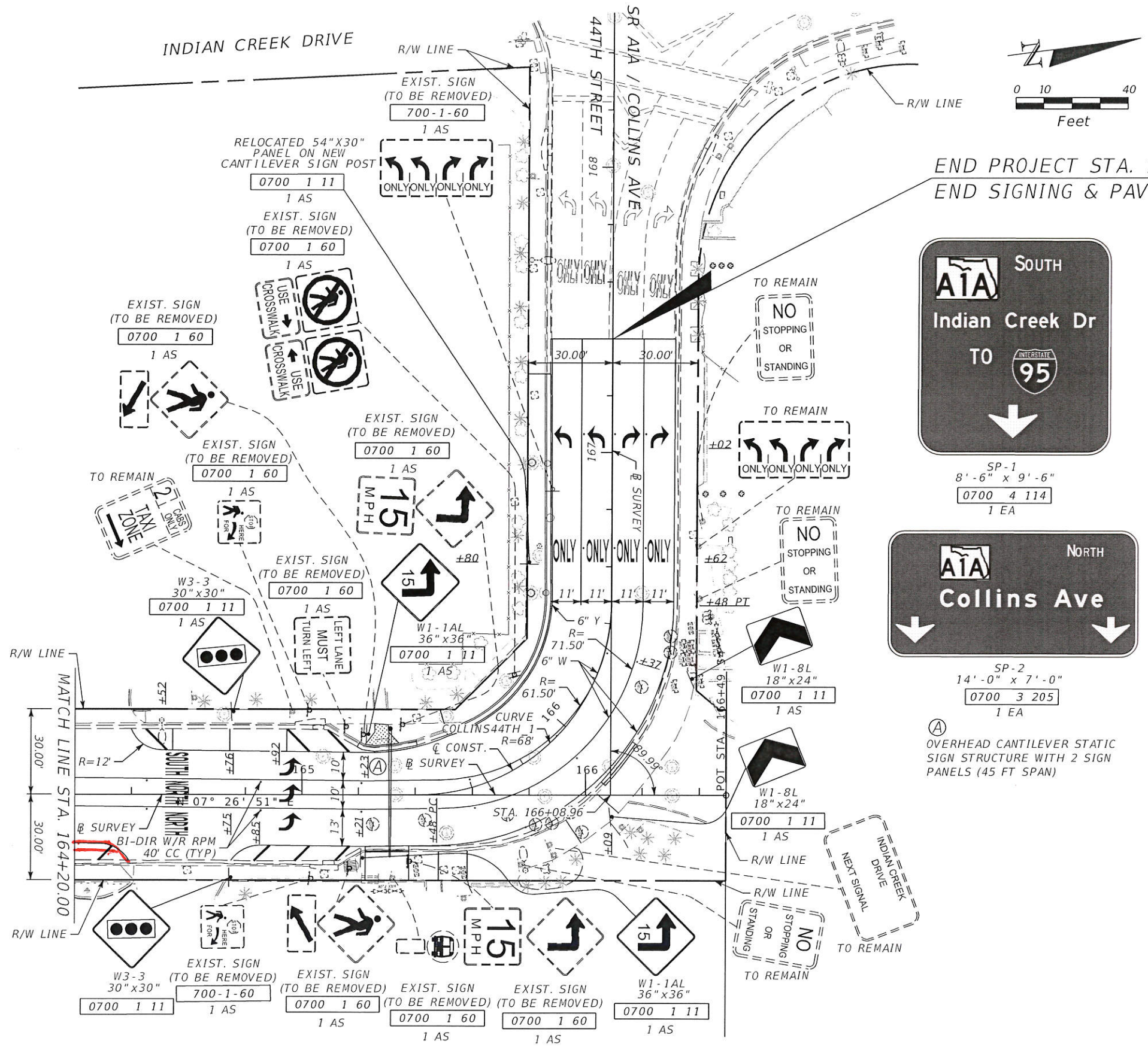
LINDA M. BELL, P.E.  
FL P.E. LICENSE NUMBER 38542  
CIVIL WORKS, INC.  
8491 N.W. 17 STREET, SUITE 108  
DORAL, FLORIDA 33126 305-591-4323

STATE OF FLORIDA DEPARTMENT OF TRANSPORTATION		
ROAD NO.	COUNTY	FINANCIAL PROJECT ID
SR A1A	MIAMI-DADE	443902-1-52-01

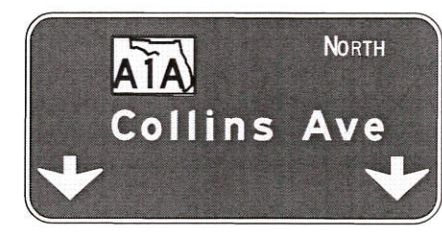
**SIGNING AND PAVEMENT  
MARKINGS**

SHEET NO.  
S-14

THE OFFICIAL RECORD OF THIS SHEET IS THE ELECTRONIC FILE DIGITALLY SIGNED AND SEALED UNDER RULE 61G15-23.004, F.A.C.



END PROJECT STA. 167+40.00  
 END SIGNING & PAV'T MARKINGS



Ⓐ OVERHEAD CANTILEVER STATIC SIGN STRUCTURE WITH 2 SIGN PANELS (45 FT SPAN)

END BIKE LANE

REVISIONS				LINDA M. BELL, P.E. FL P.E. LICENSE NUMBER 38542 CIVIL WORKS, INC. 8491 N.W. 17 STREET, SUITE 108 DORAL, FLORIDA 33126 305-591-4323	STATE OF FLORIDA DEPARTMENT OF TRANSPORTATION			SHEET NO.  S-15
DATE	DESCRIPTION	DATE	DESCRIPTION		ROAD NO.	COUNTY	FINANCIAL PROJECT ID	
					SR A1A	MIAMI-DADE	443902-1-52-01	

THE OFFICIAL RECORD OF THIS SHEET IS THE ELECTRONIC FILE DIGITALLY SIGNED AND SEALED UNDER RULE 61G15-23.004, F.A.C.